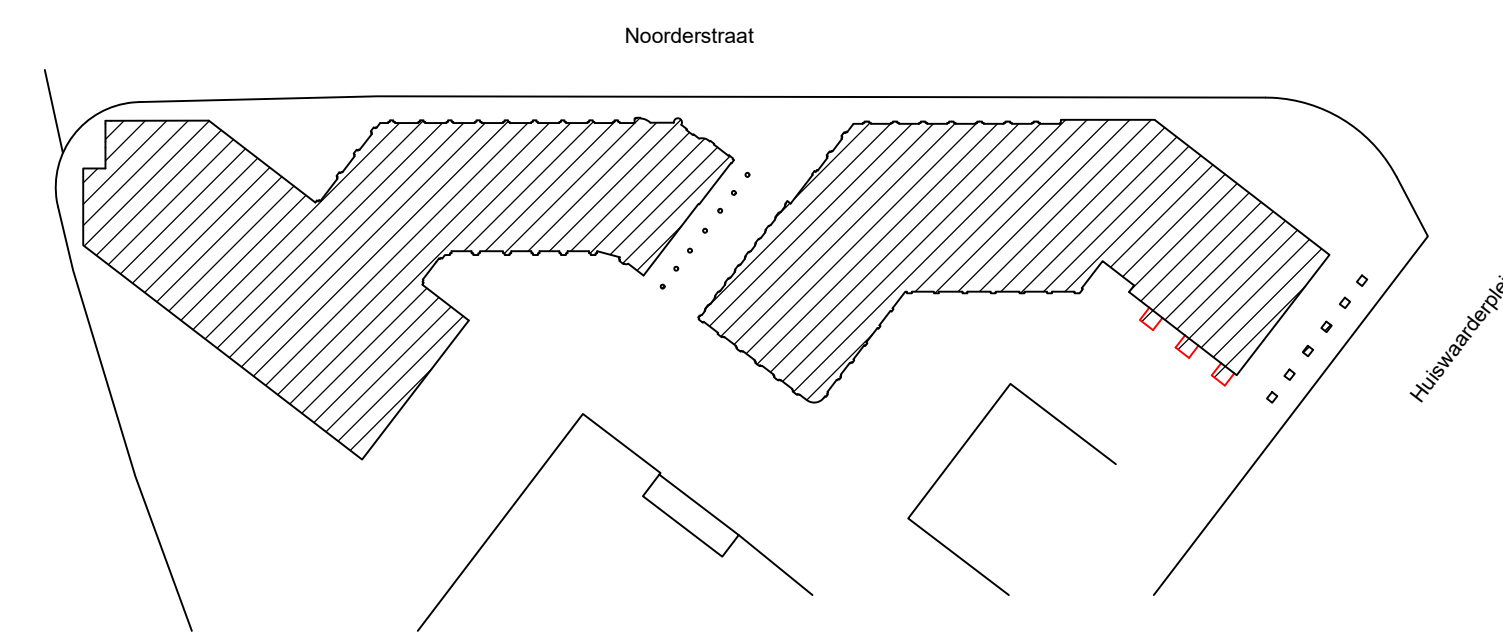


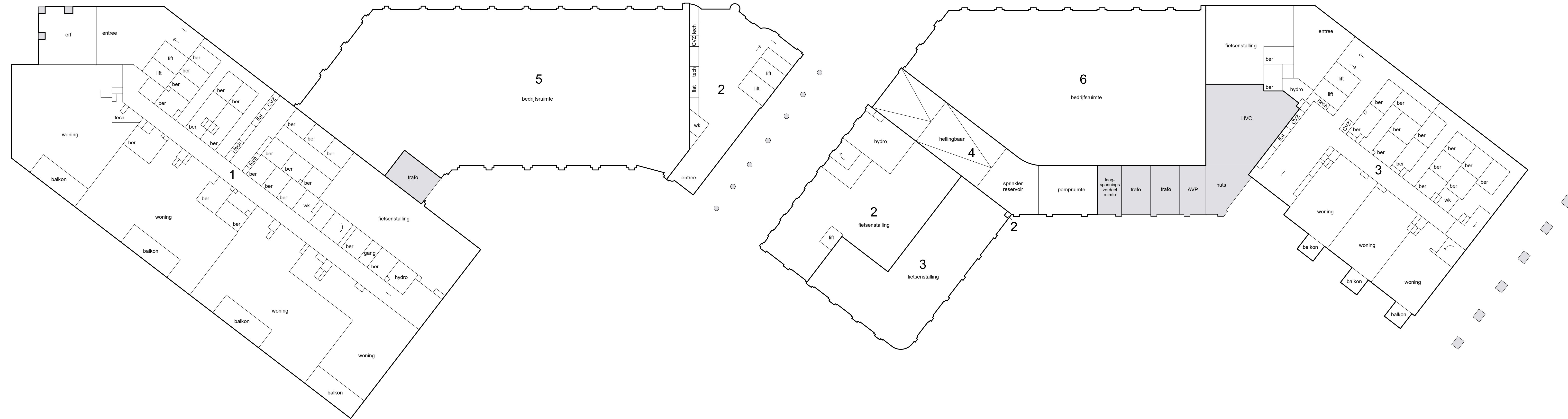
Voorgenomen splitsing in appartementsrechten van het kadastrale perceel: Alkmaar C 9367, 9368, 9369, 9370, 9371, 9372, 9373, 9374, 9375, 9377, 9378, 9379, 9380, 9381 en 9382



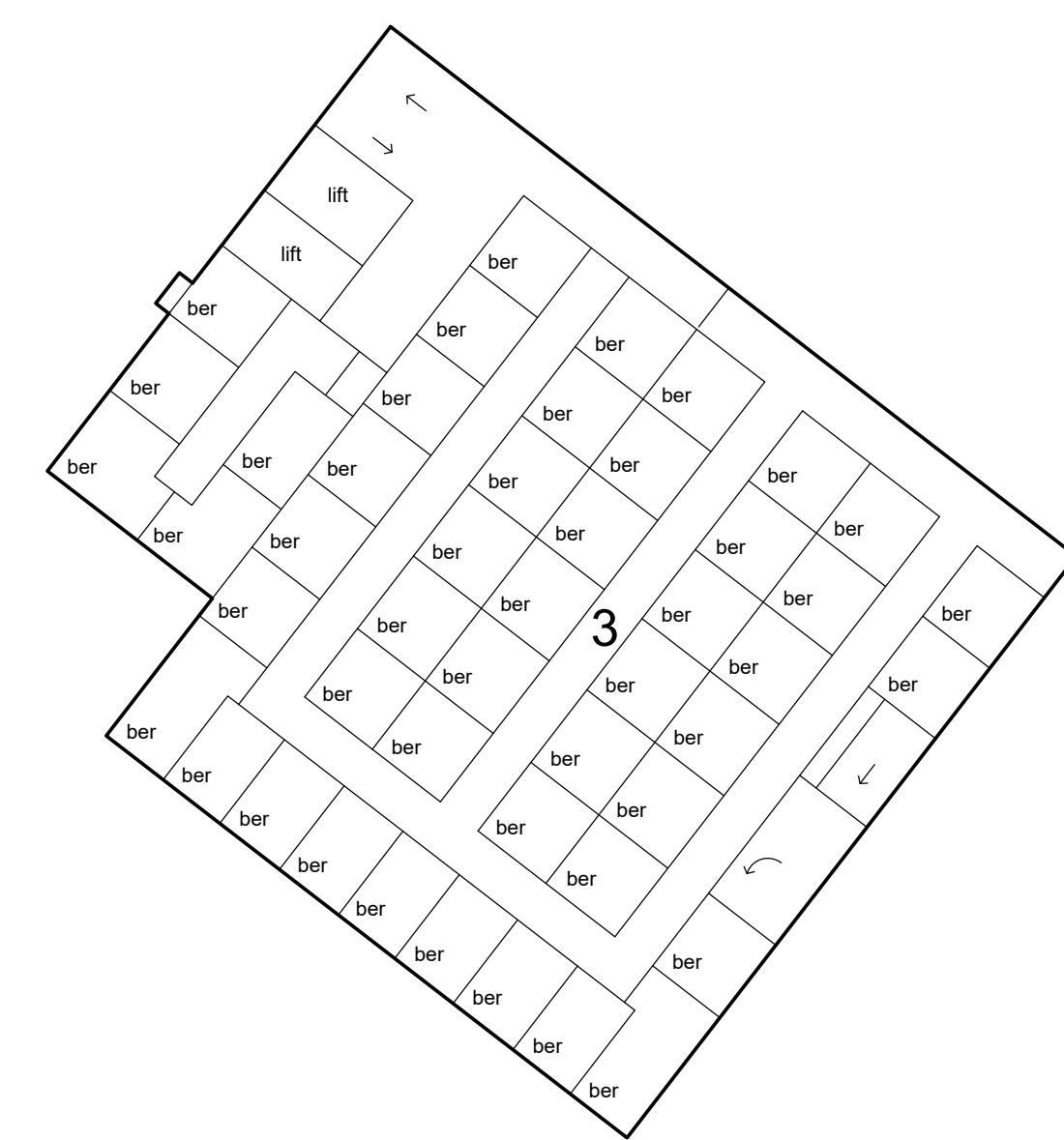
= Erfdienbaarheid

Schaal 1 : 200
 = Gemeenschappelijk
 Tekening bestaat uit 10 bladen
 Blad 1

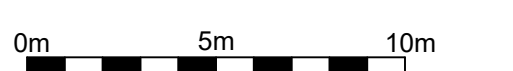
Situatie 1: 1000 Alkmaar C 9367, 9368, 9369, 9370, 9371, 9372, 9373, 9374, 9375, 9377, 9378, 9379, 9380, 9381 en 9382



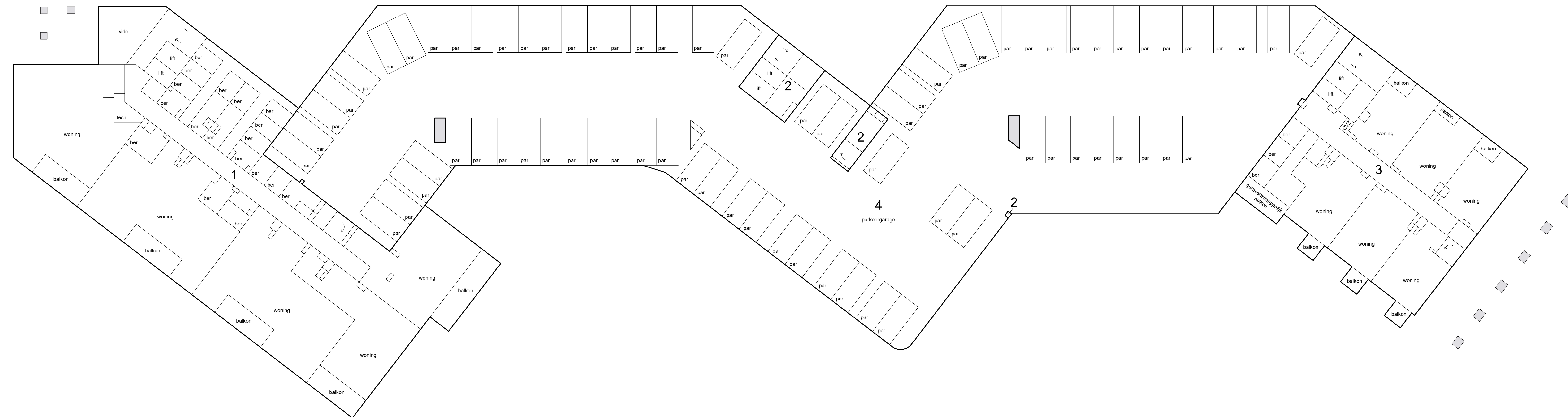
begane grond



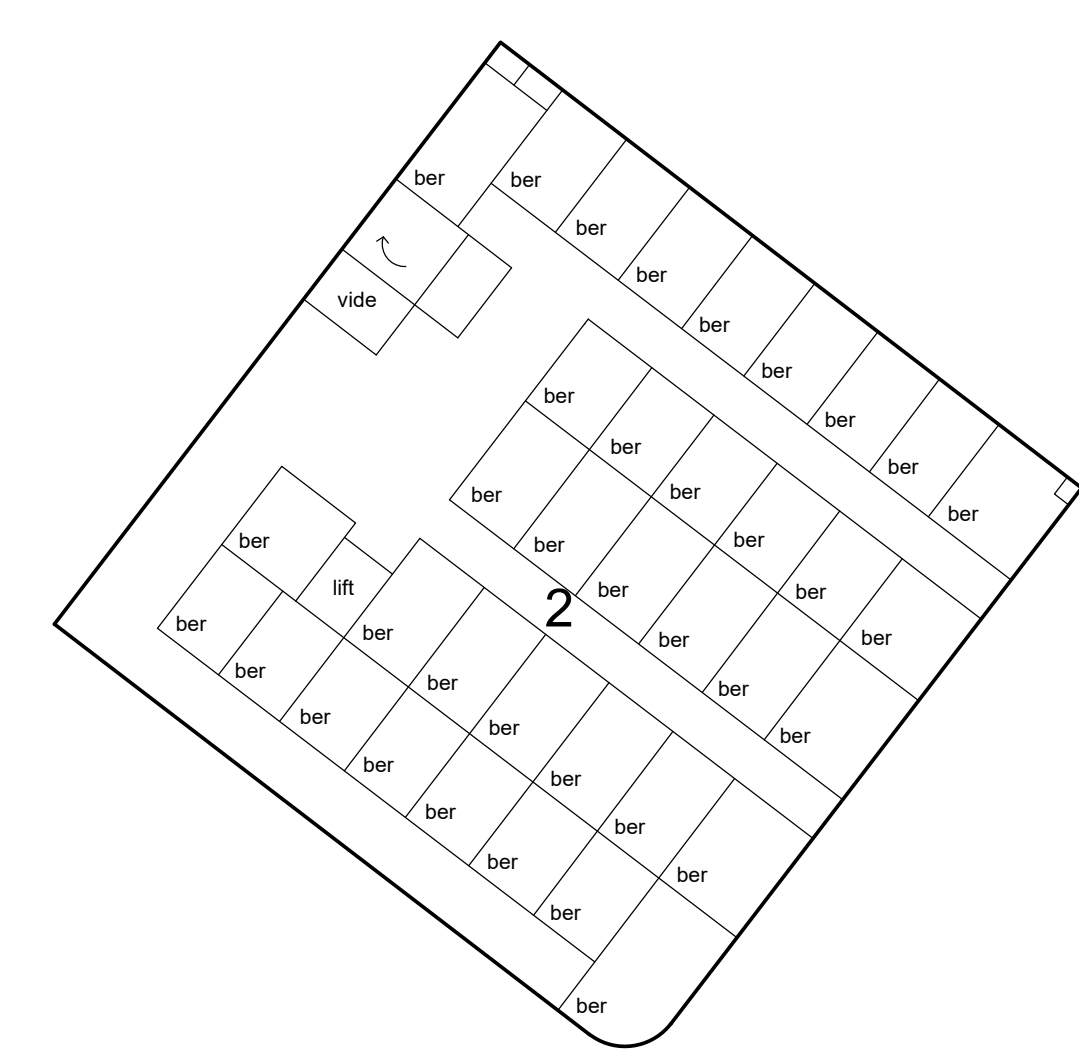
kelder



Schaal 1 : 200
= Gemeenschappelijk
Tekening bestaat uit 10 bladen
Blad 2



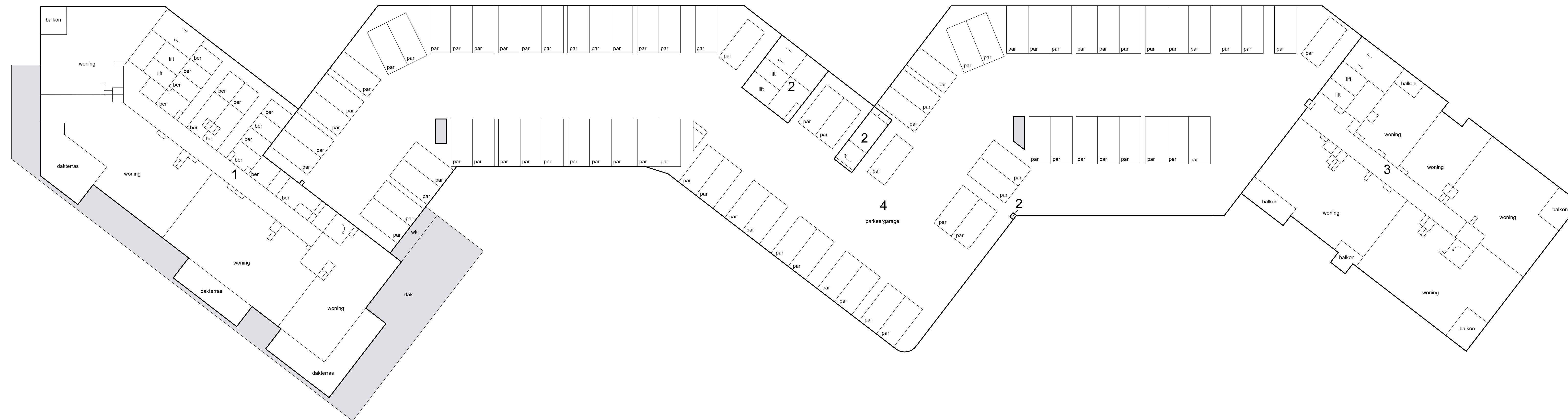
1e etage



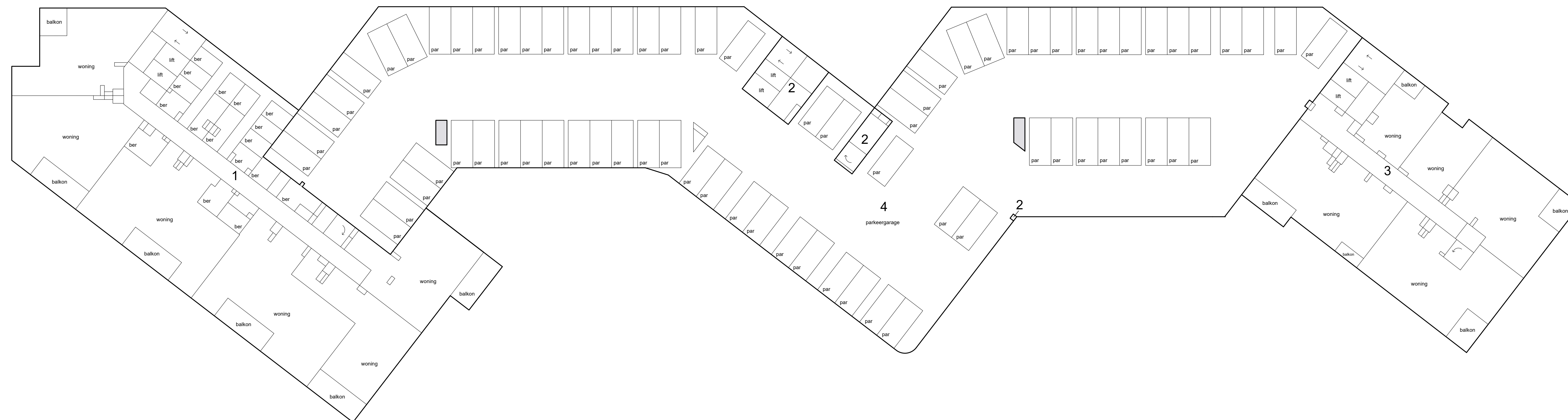
tussenverdieping



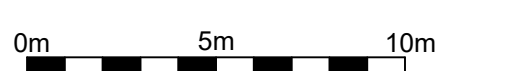
Schaal 1 : 200
= Gemeenschappelijk
Tekening bestaat uit 10 bladen
Blad 3



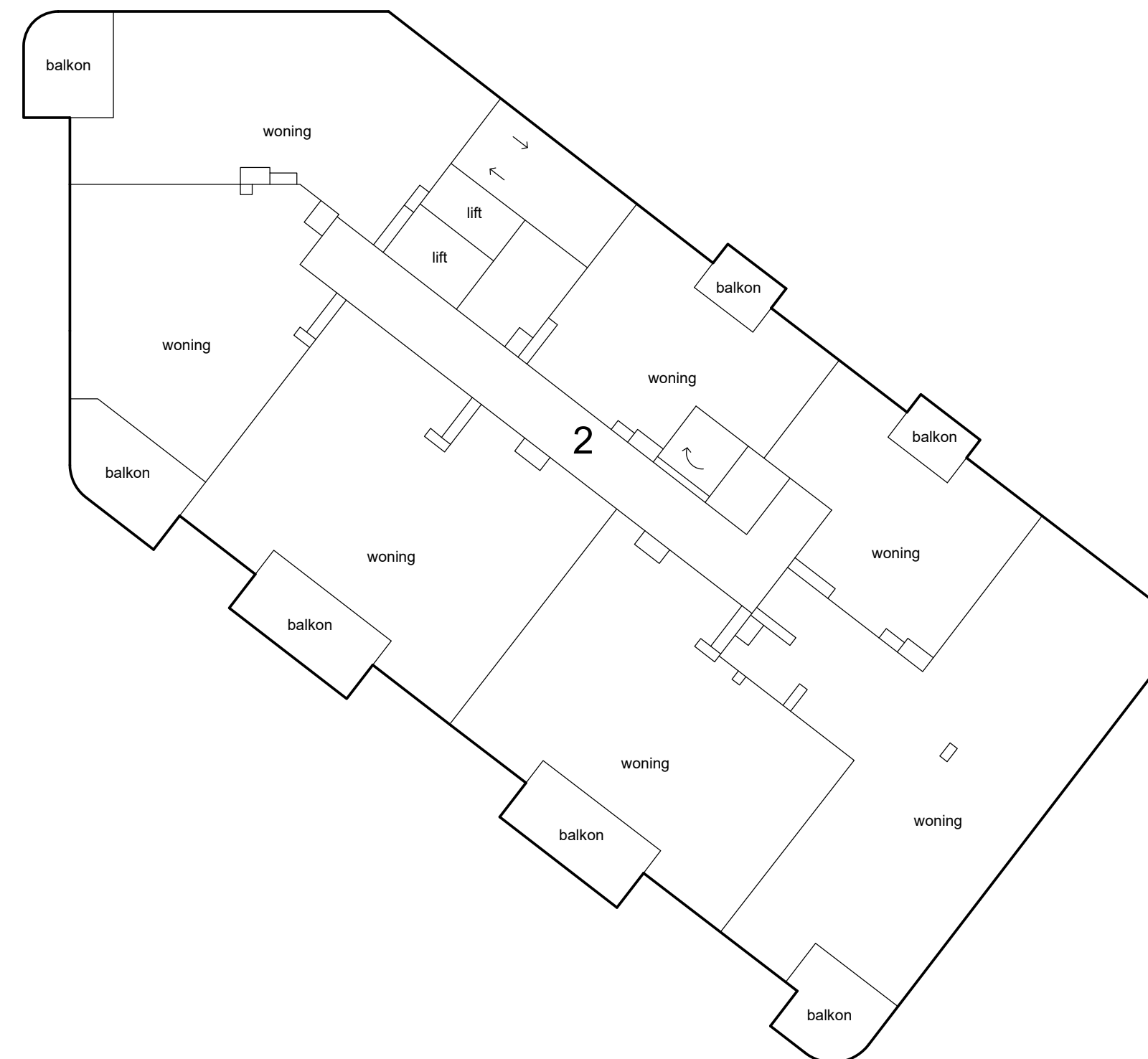
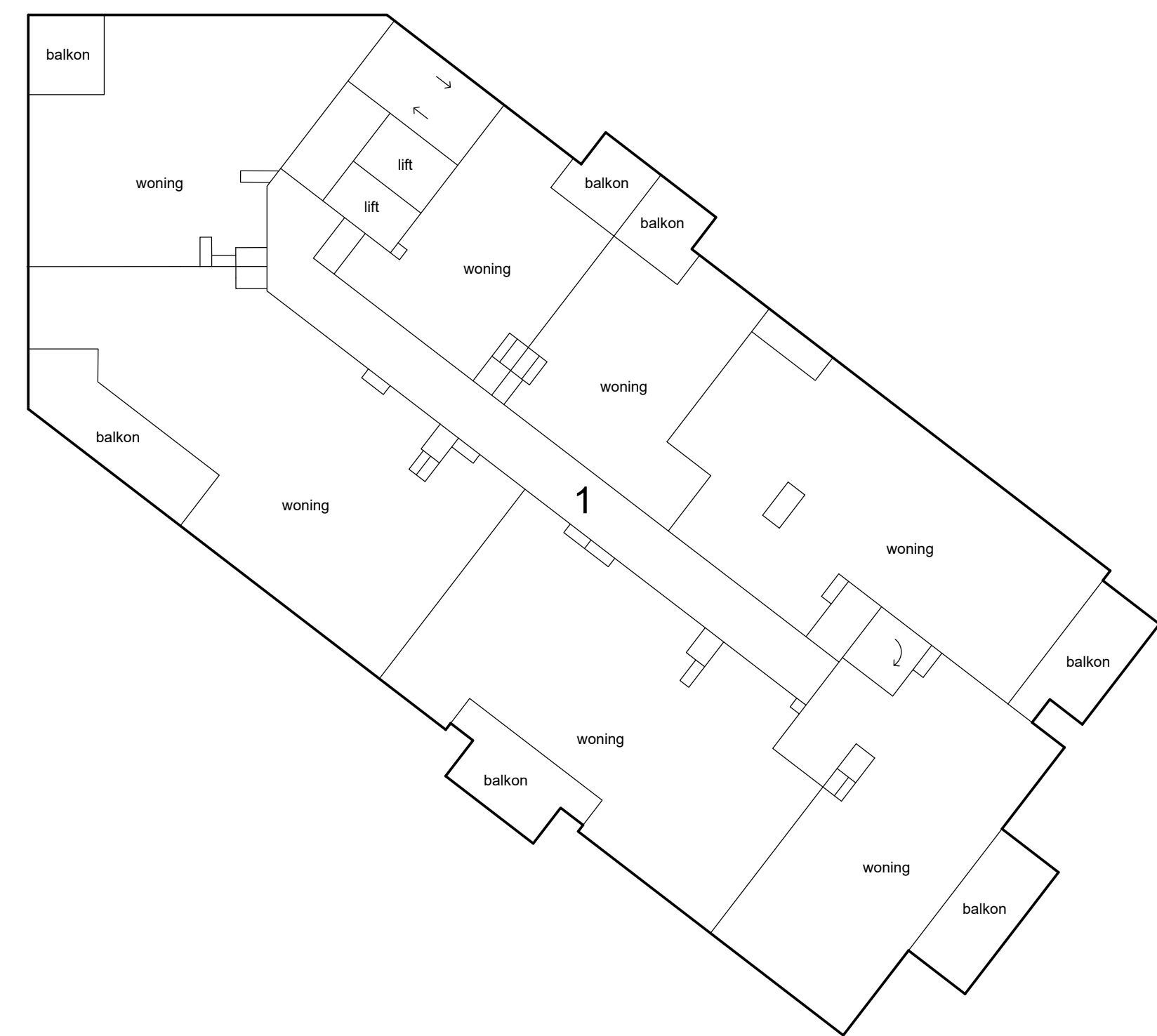
3e etage



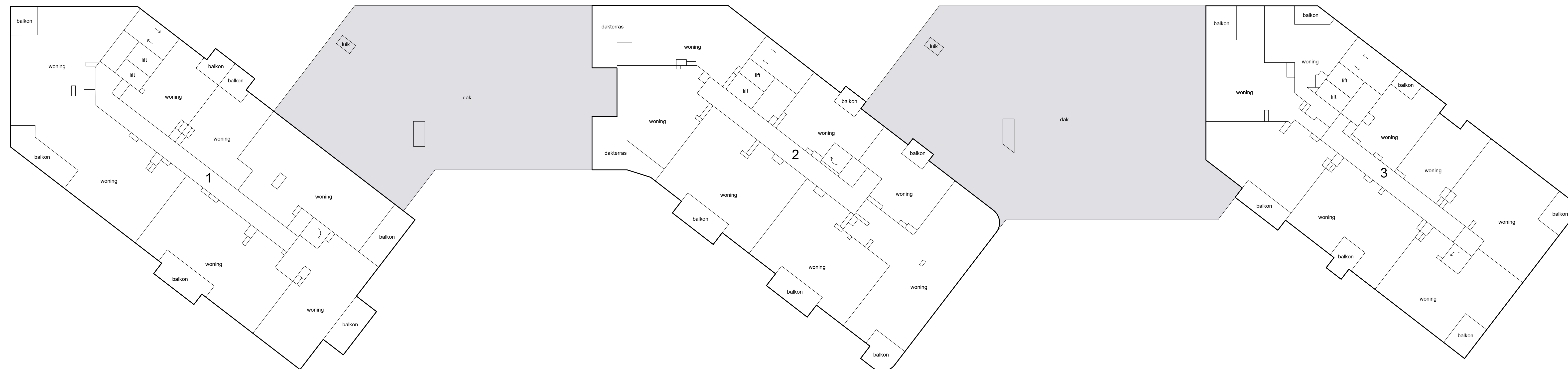
2e etage



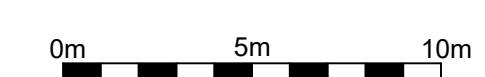
Schaal 1 : 200
= Gemeenschappelijk
Tekening bestaat uit 10 bladen
Blad 4



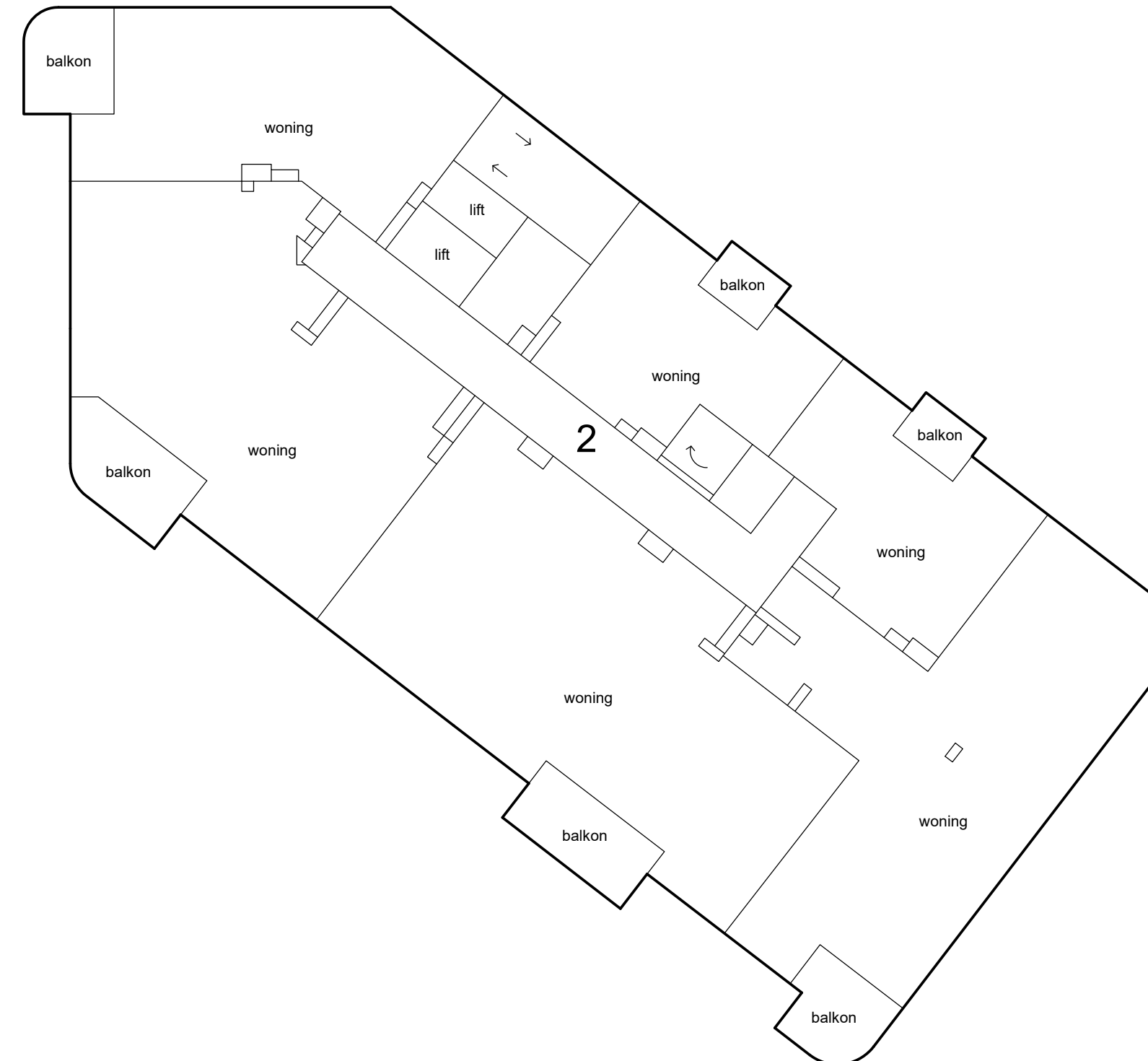
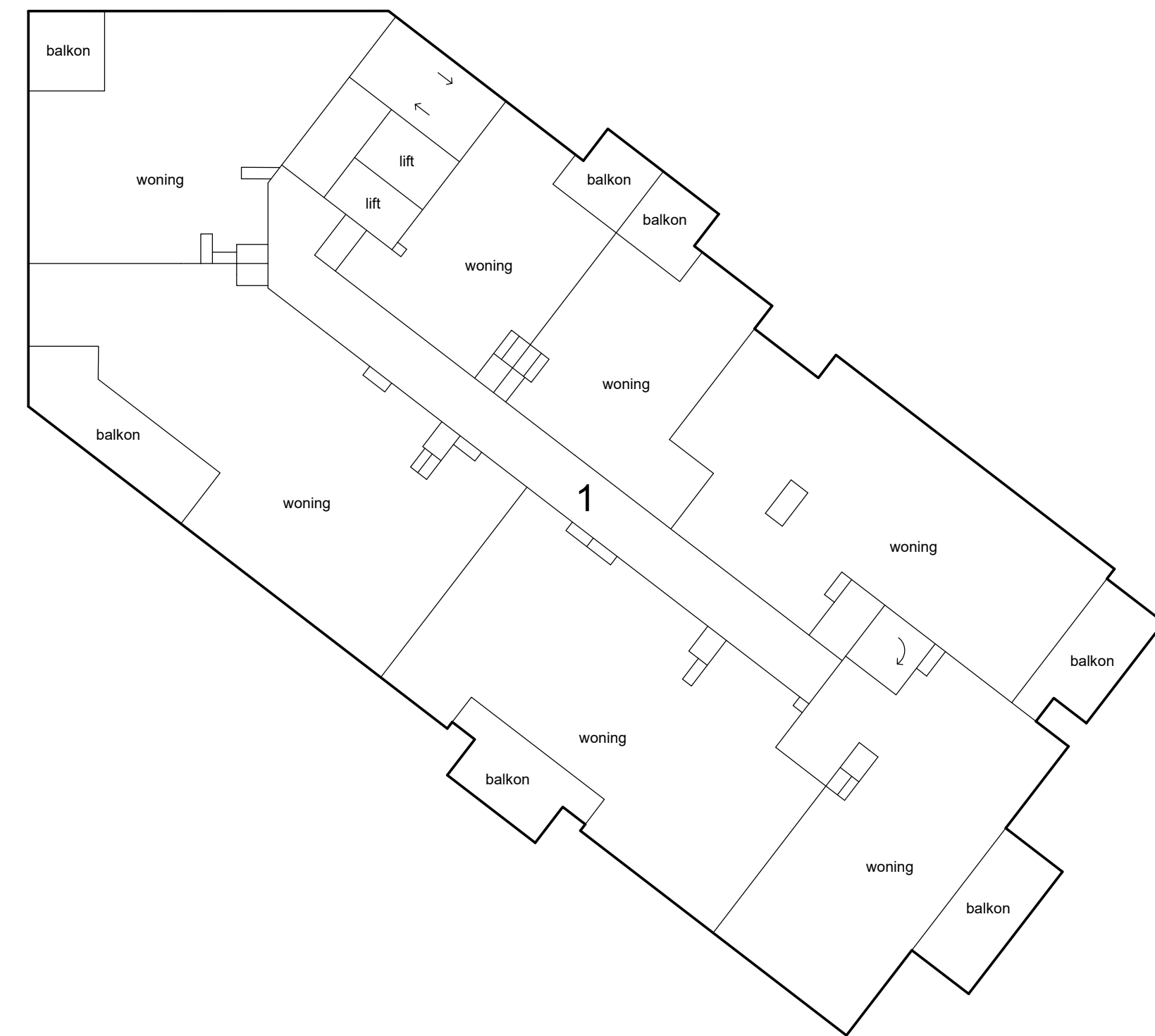
5e etage



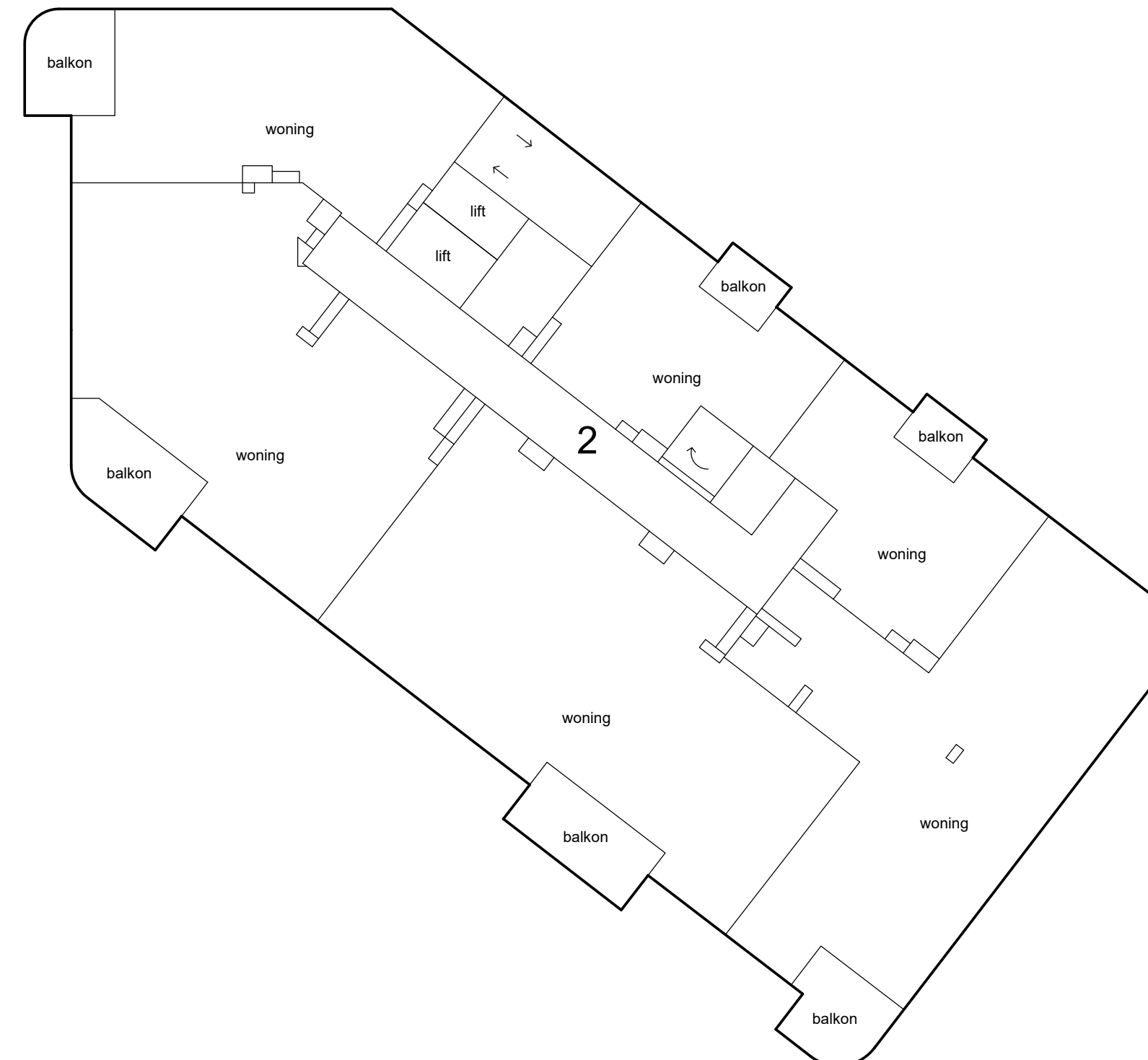
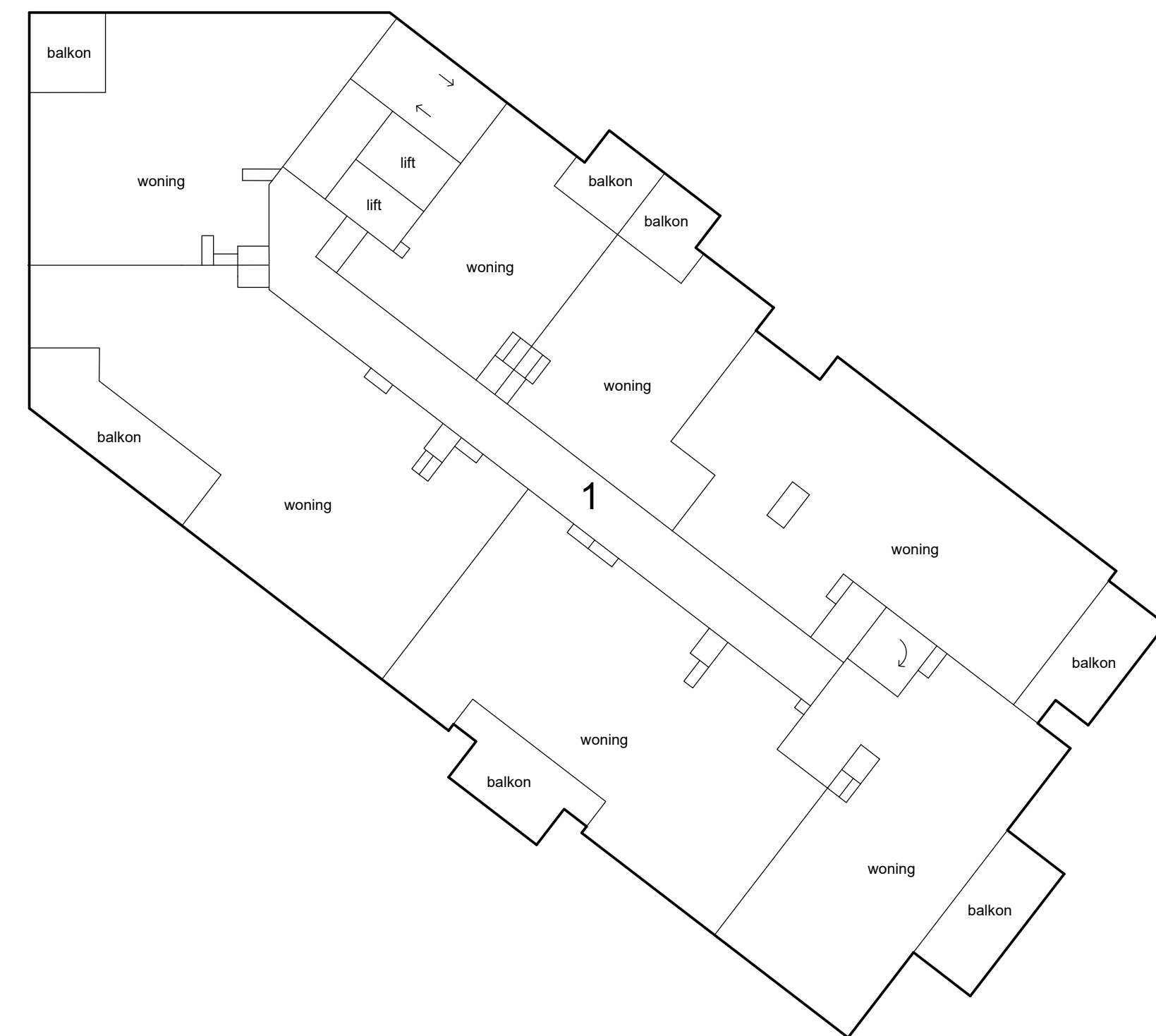
4e etage



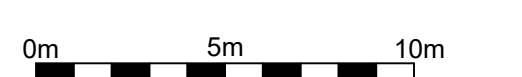
Schaal 1 : 200
= Gemeenschappelijk
Tekening bestaat uit 10 bladen
Blad 5



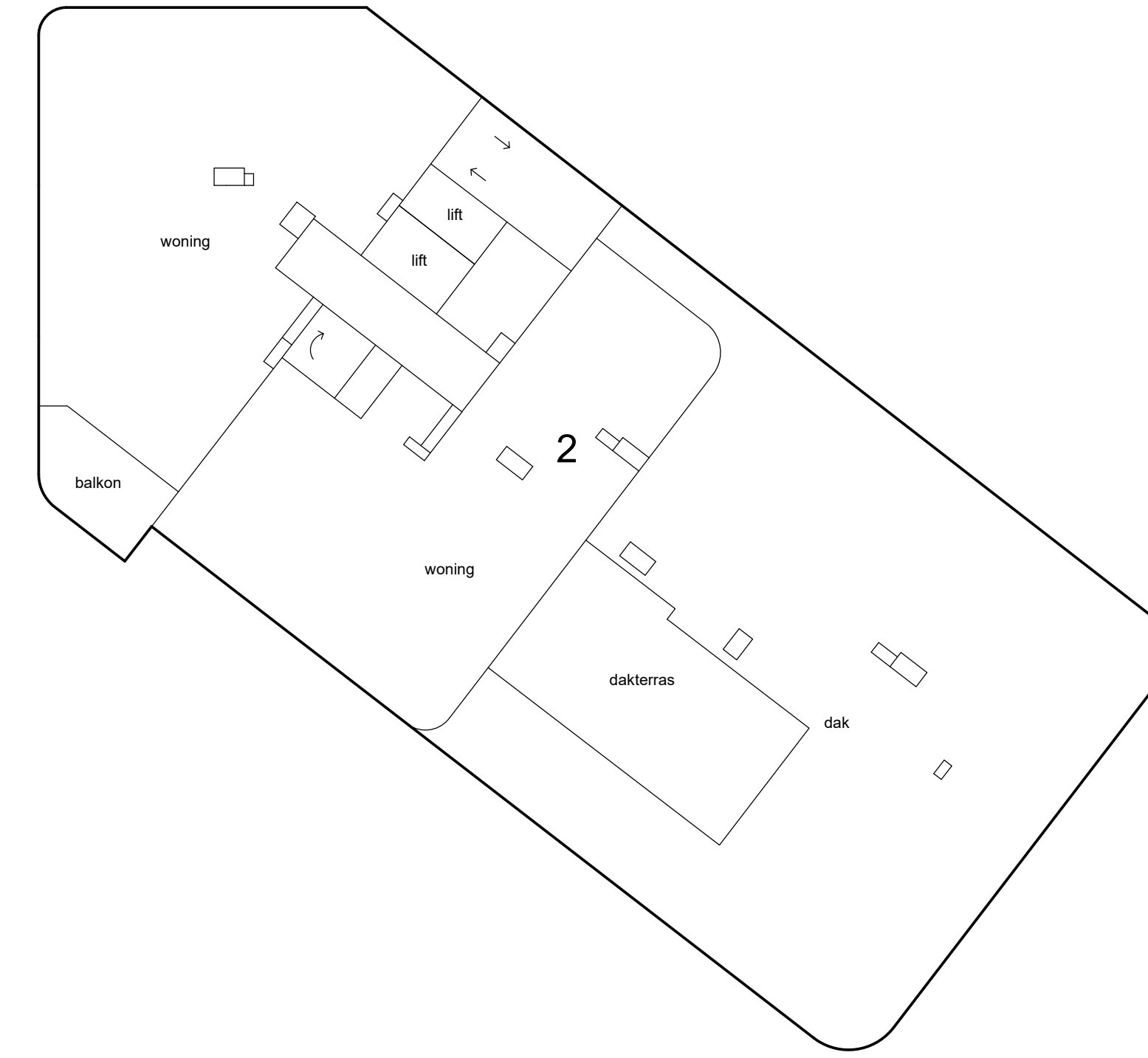
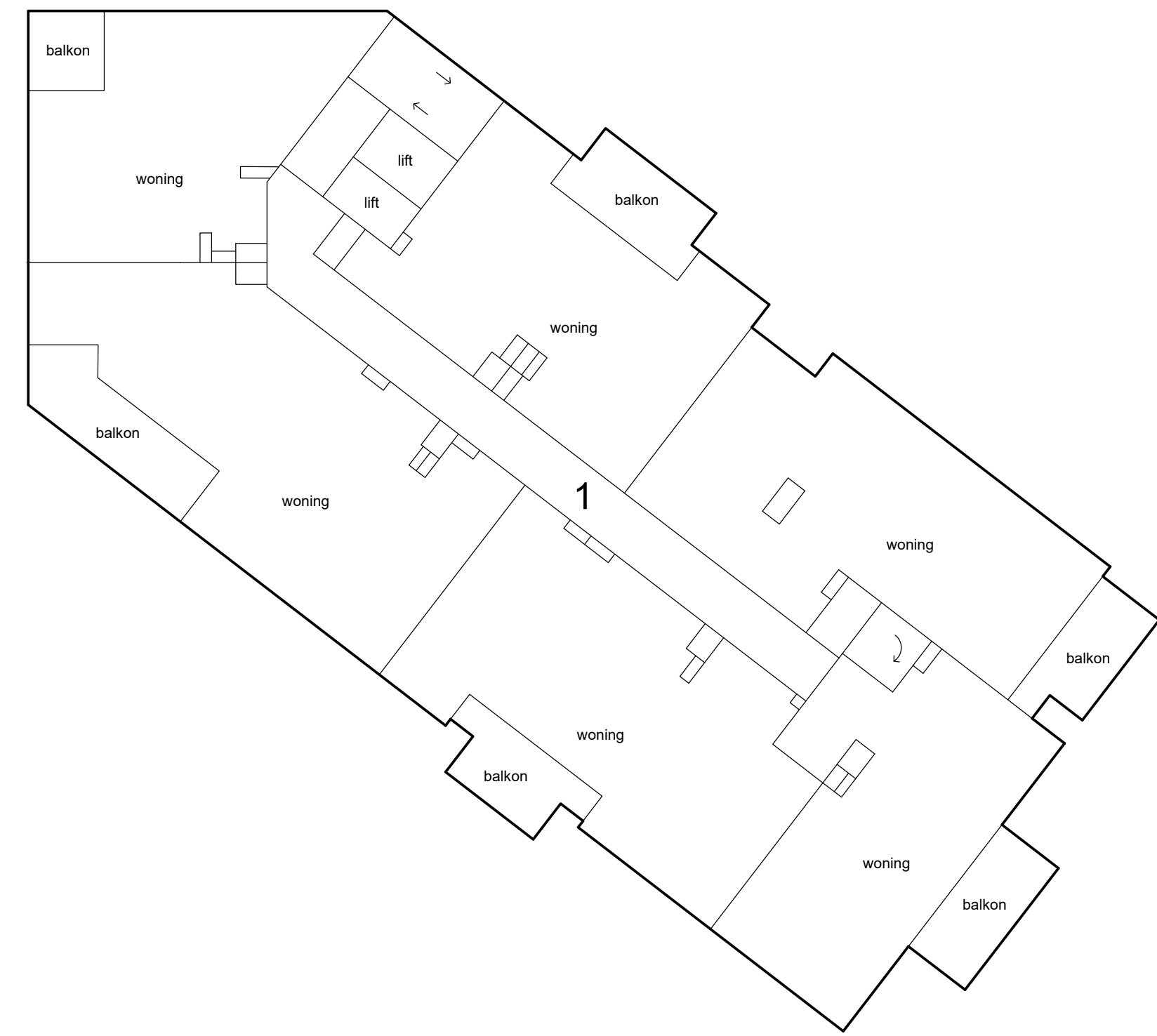
7e etage



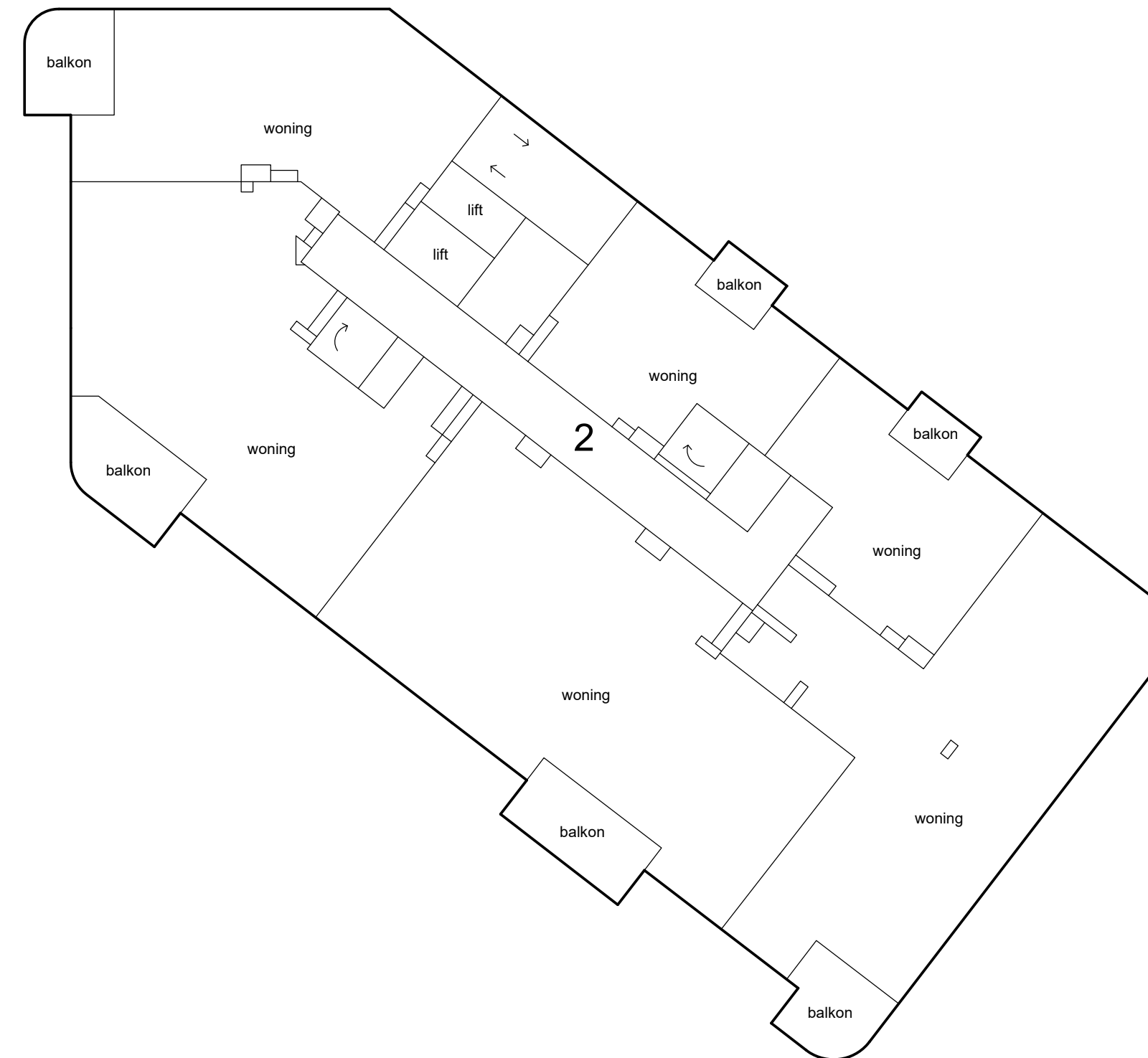
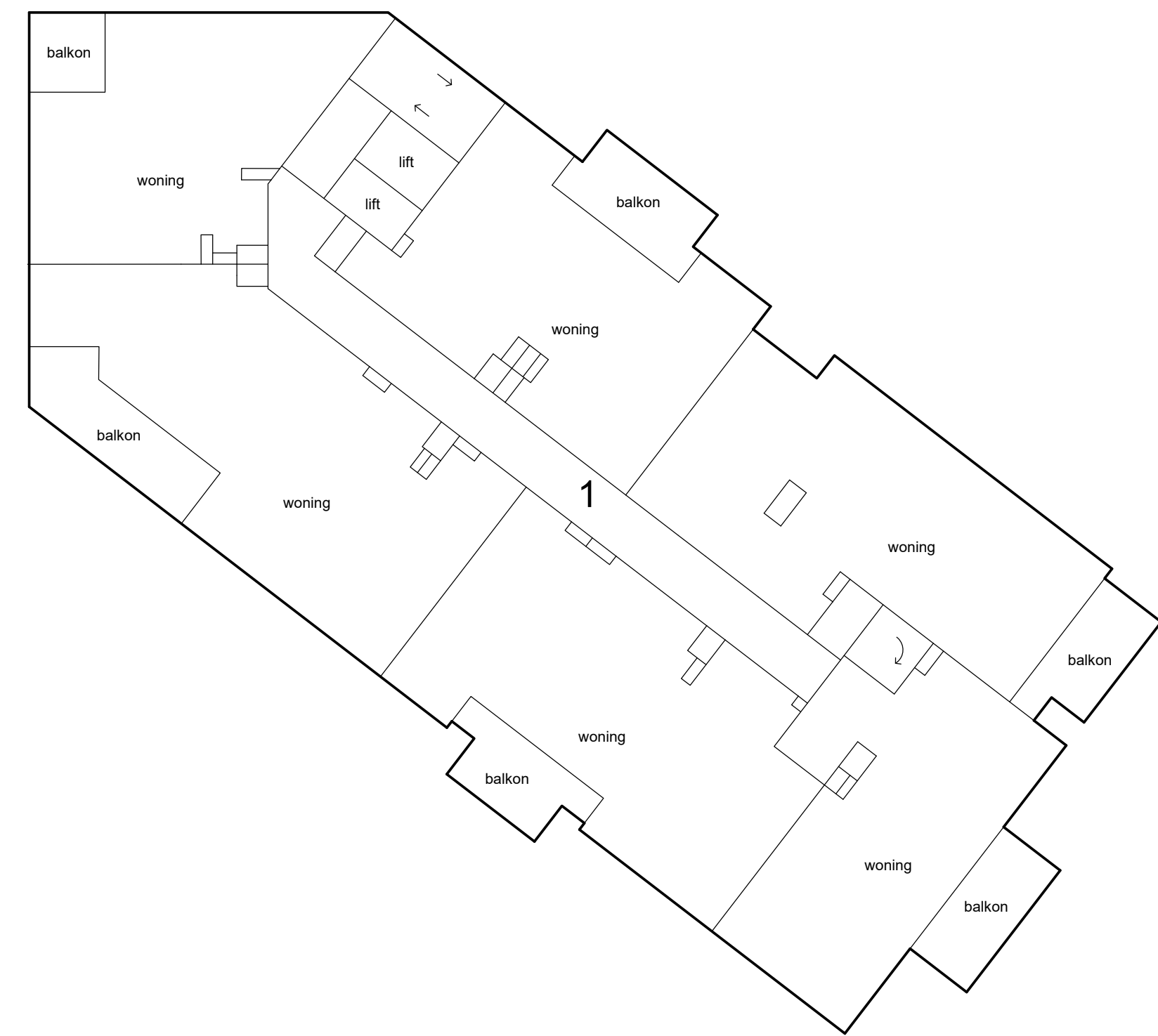
6e etage



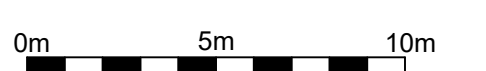
Schaal 1 : 200
= Gemeenschappelijk
Tekening bestaat uit 10 bladen
Blad 6



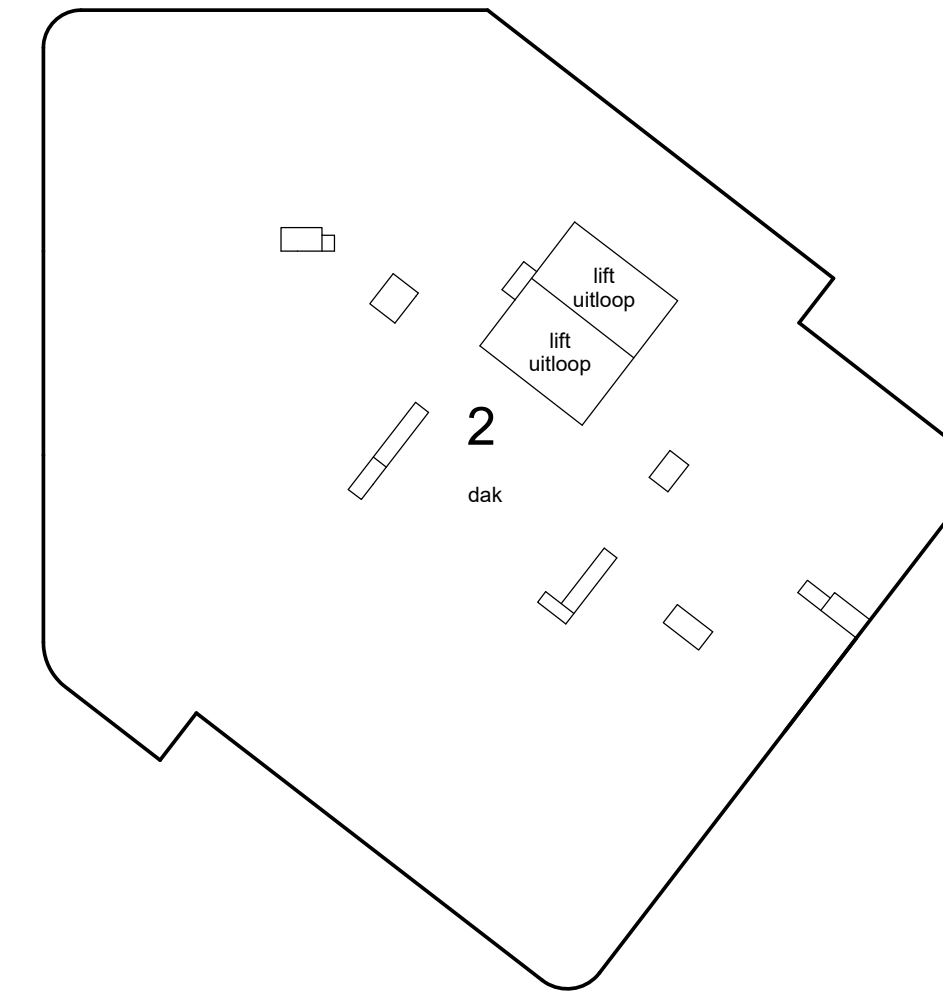
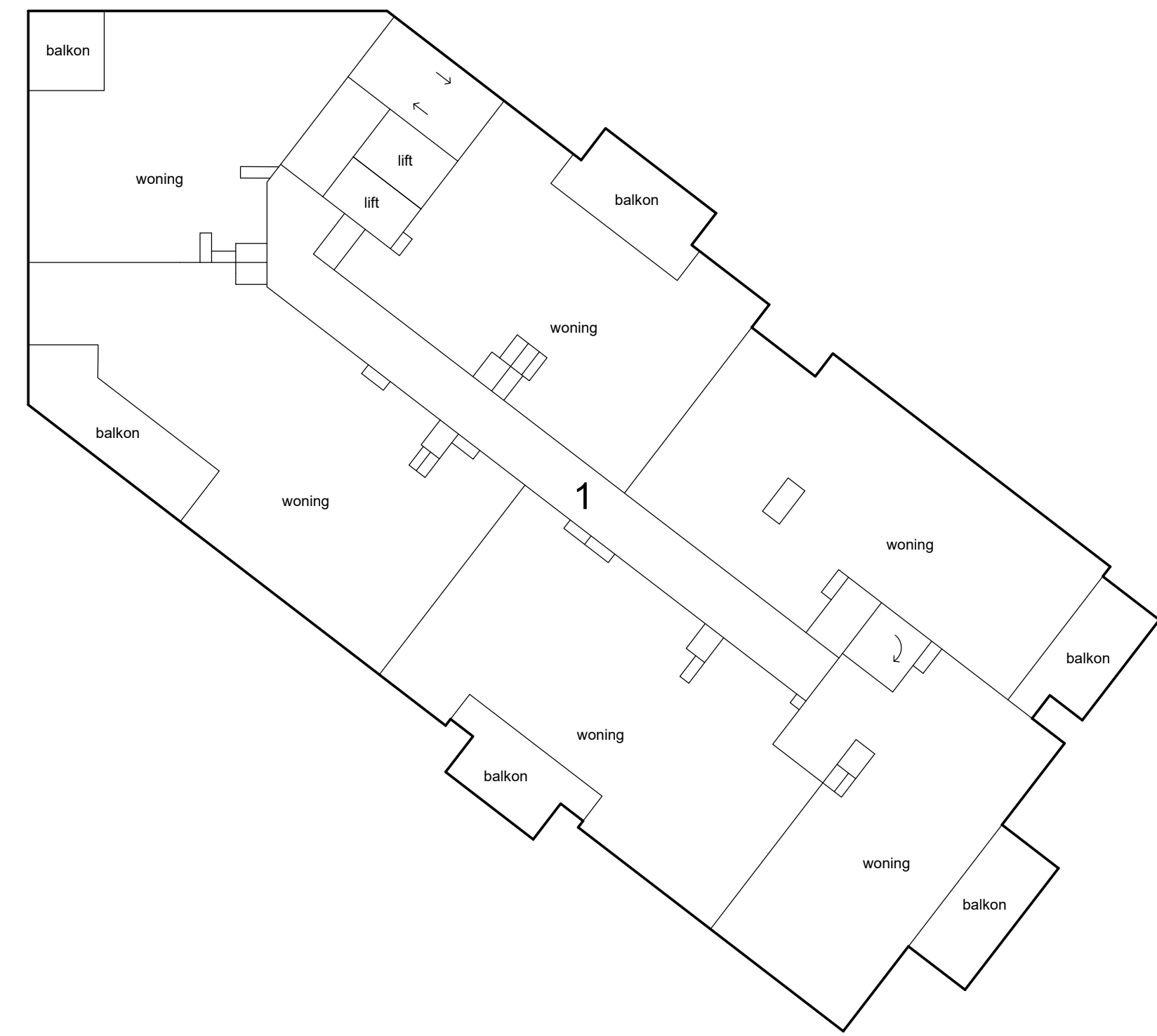
9e etage



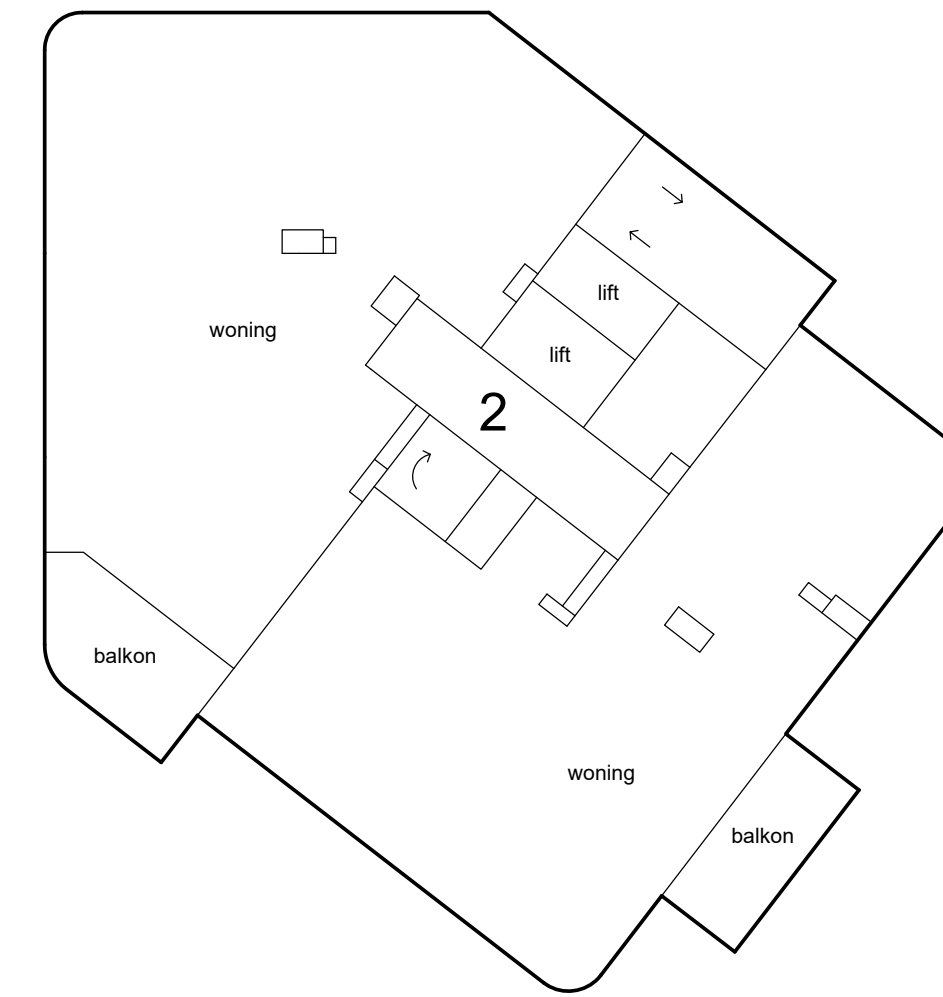
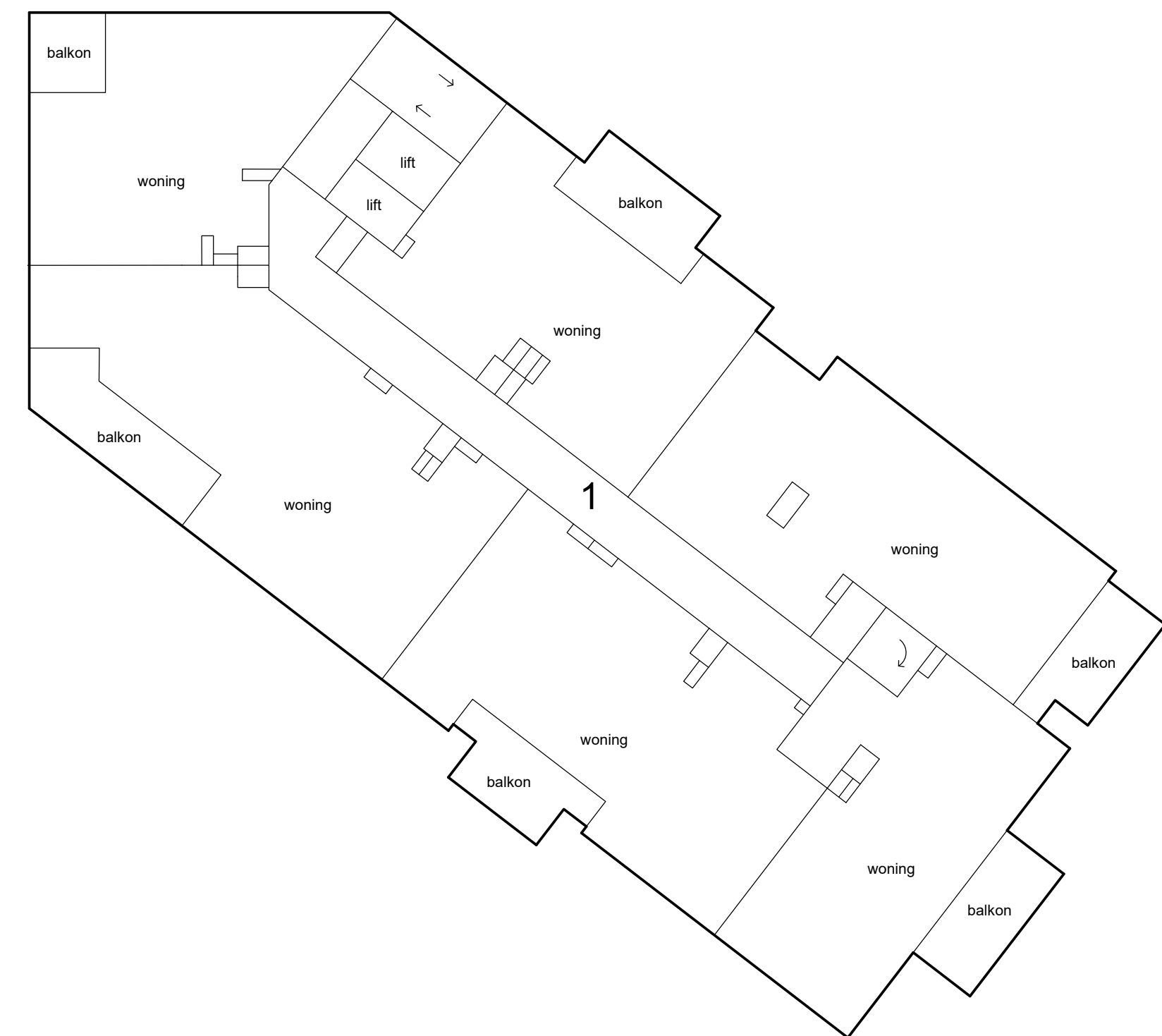
8e etage



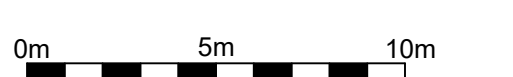
Schaal 1 : 200
= Gemeenschappelijk
Tekening bestaat uit 10 bladen
Blad 7



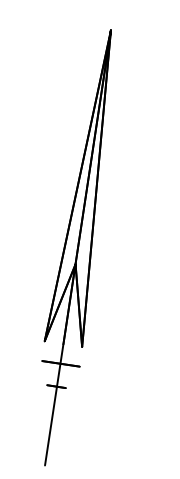
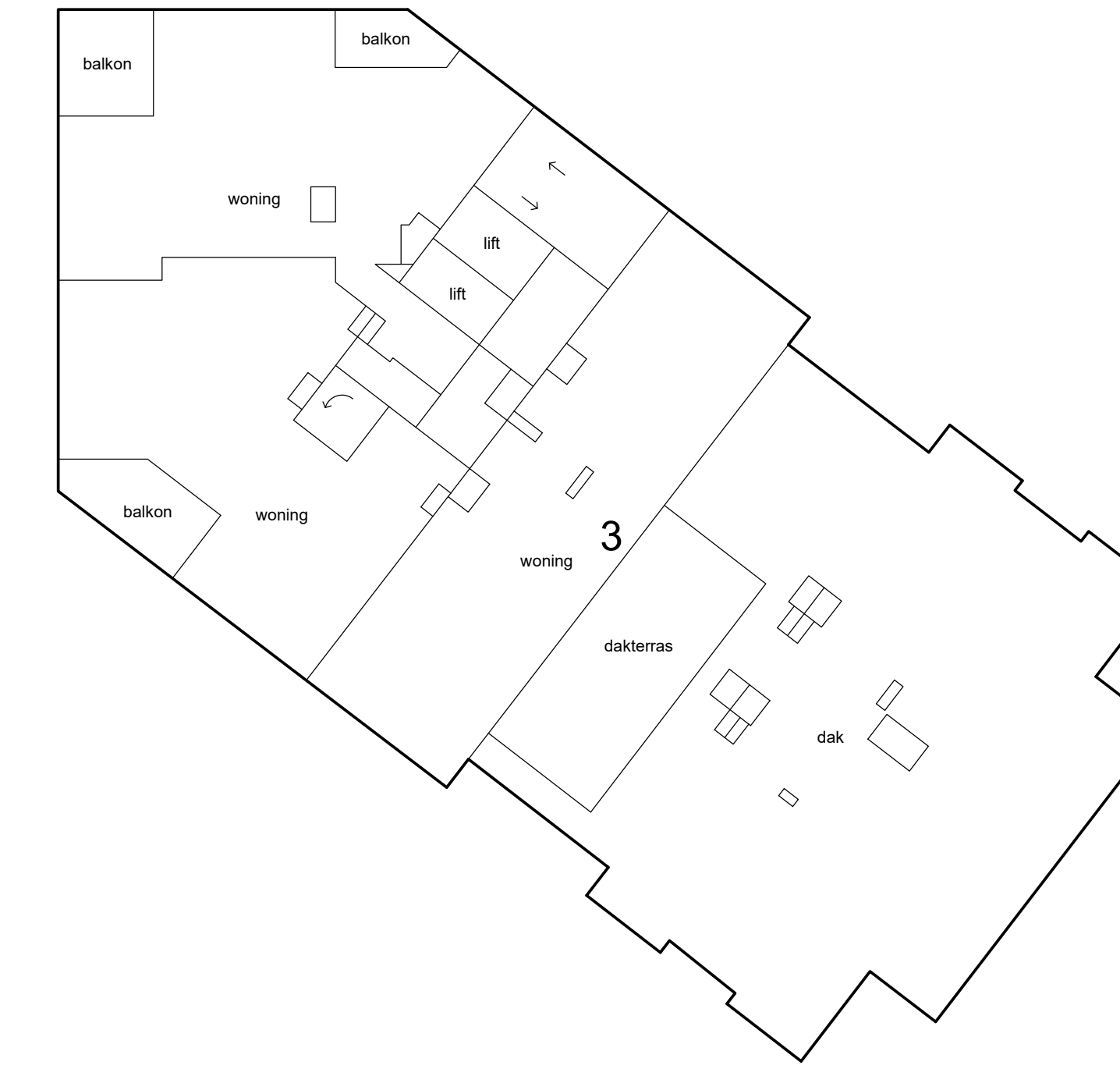
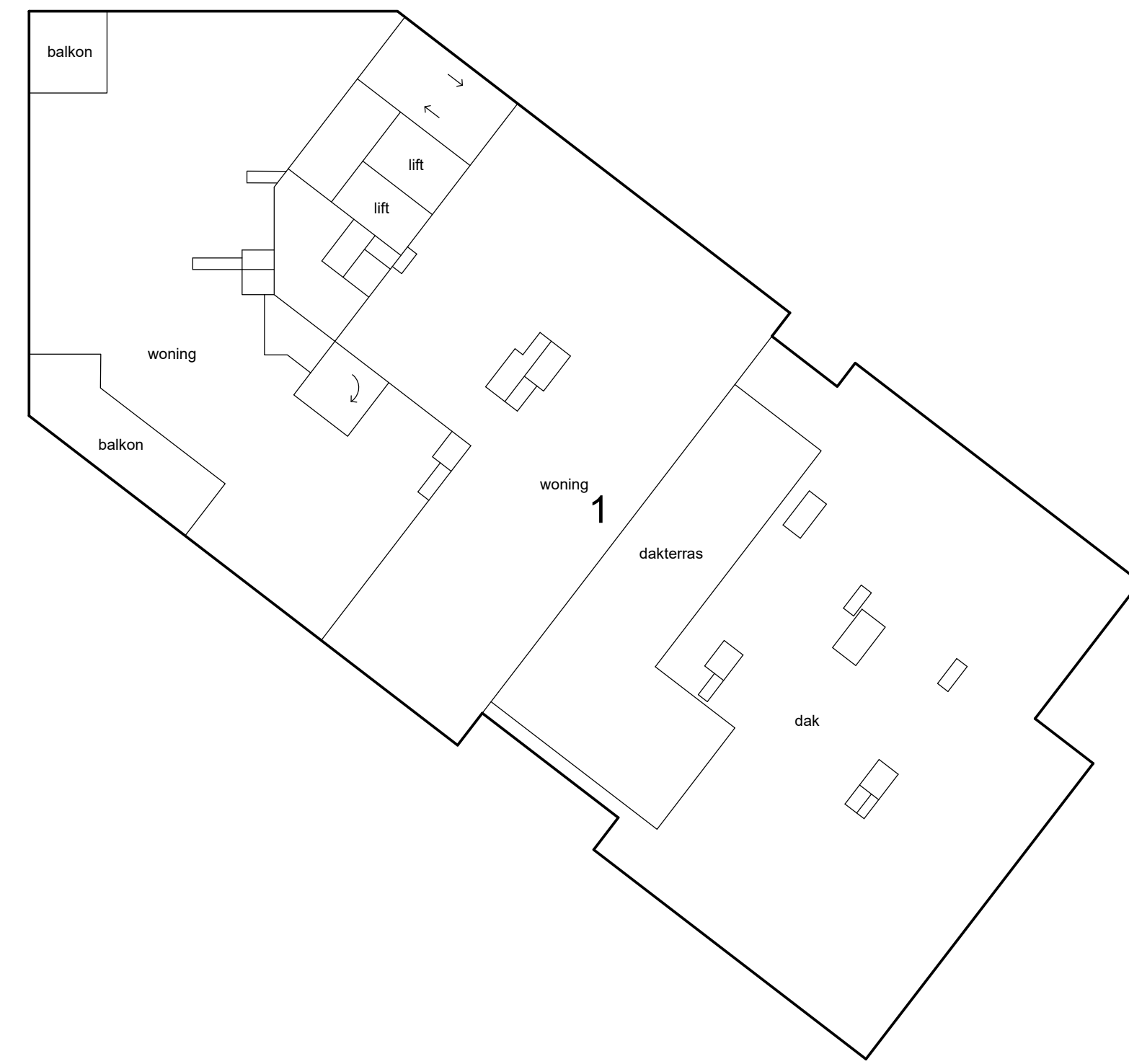
11e etage



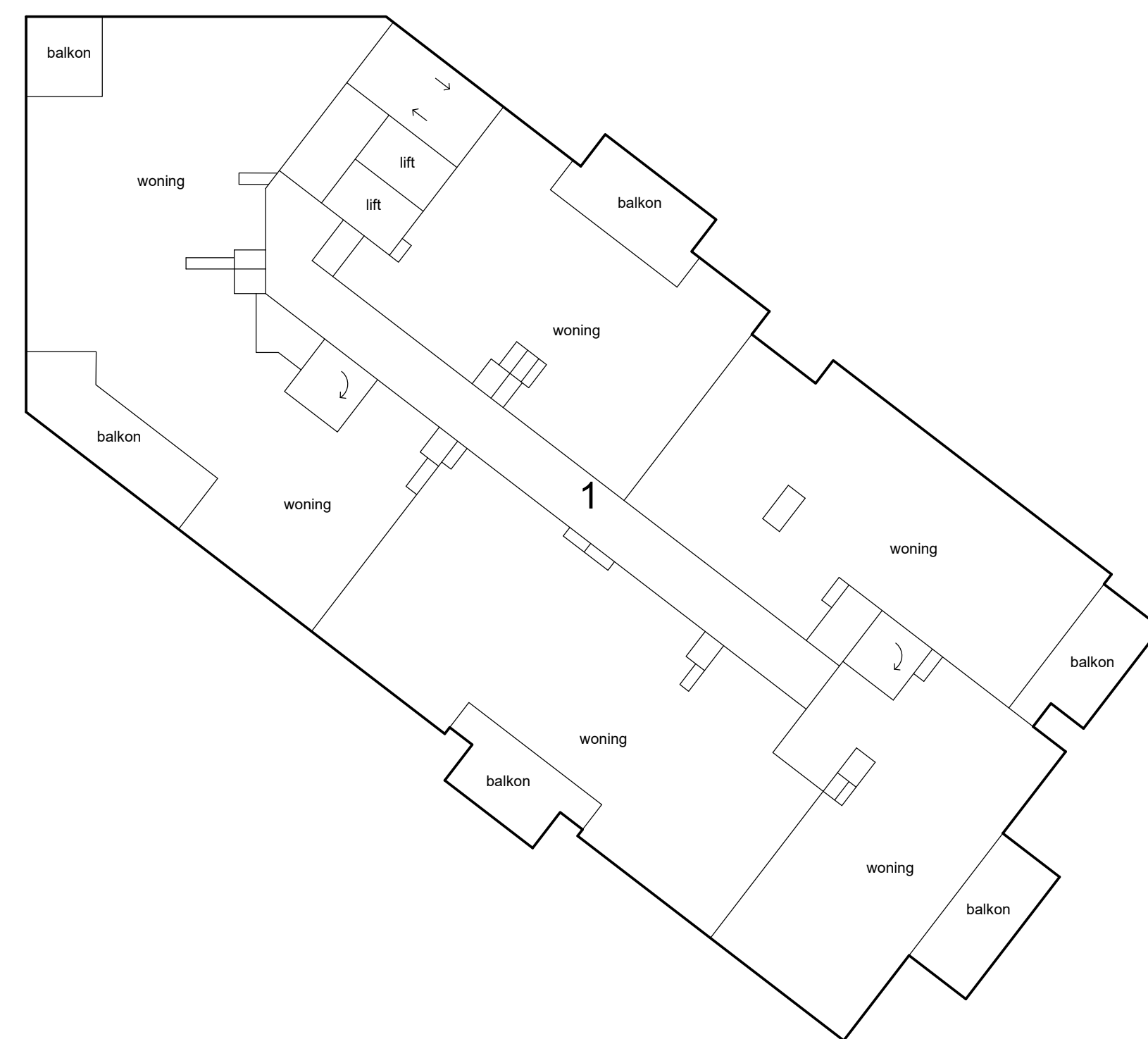
10e etage



Schaal 1 : 200
= Gemeenschappelijk
Tekening bestaat uit 10 bladen
Blad 8



13e etage



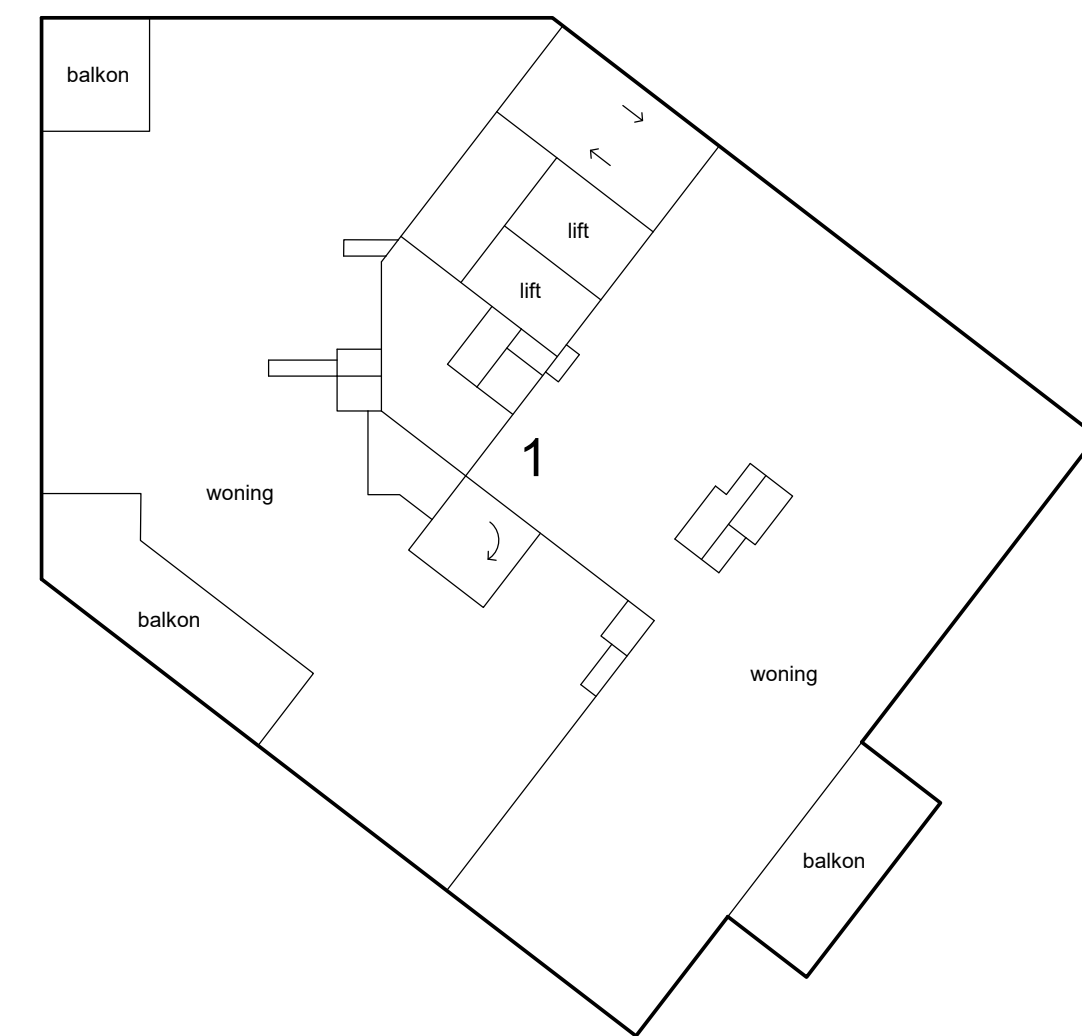
12e etage



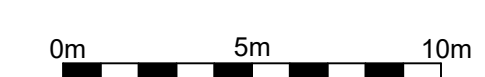
Schaal 1 : 200
= Gemeenschappelijk
Tekening bestaat uit 10 bladen
Blad 9



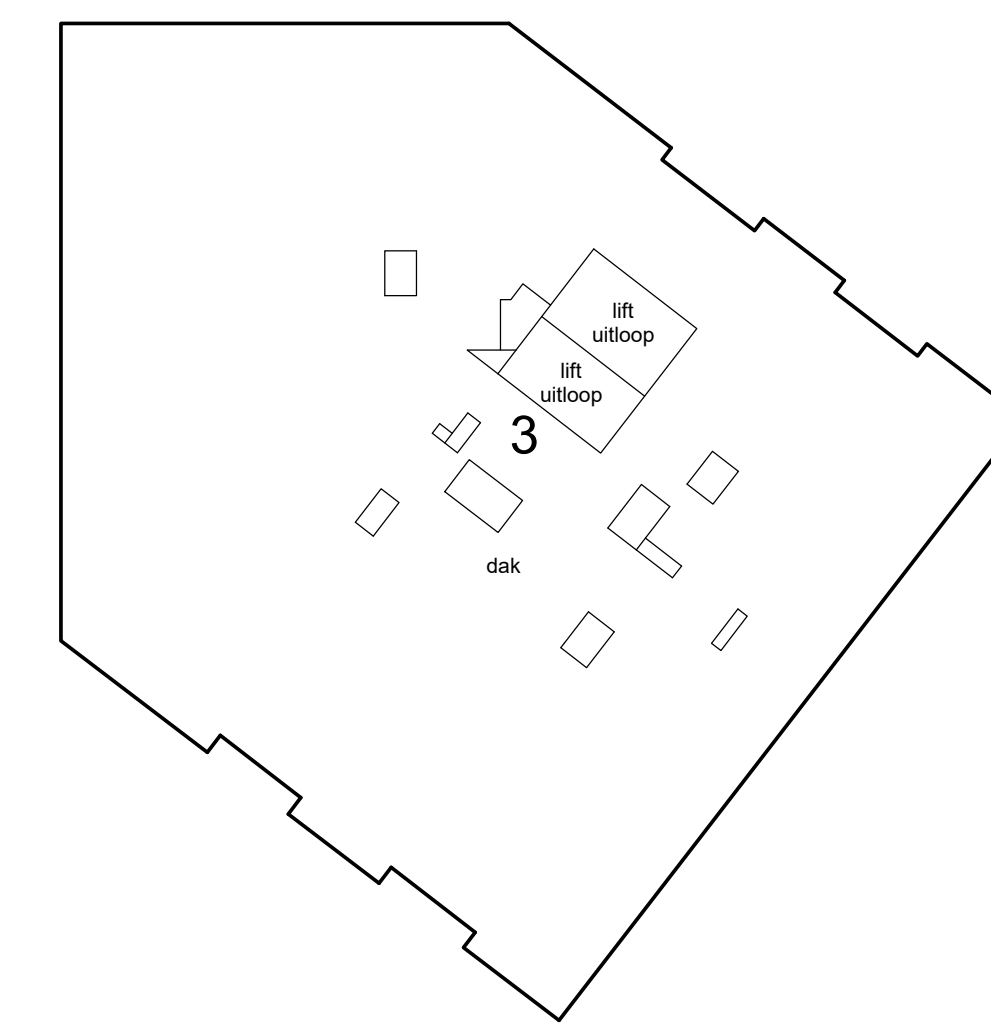
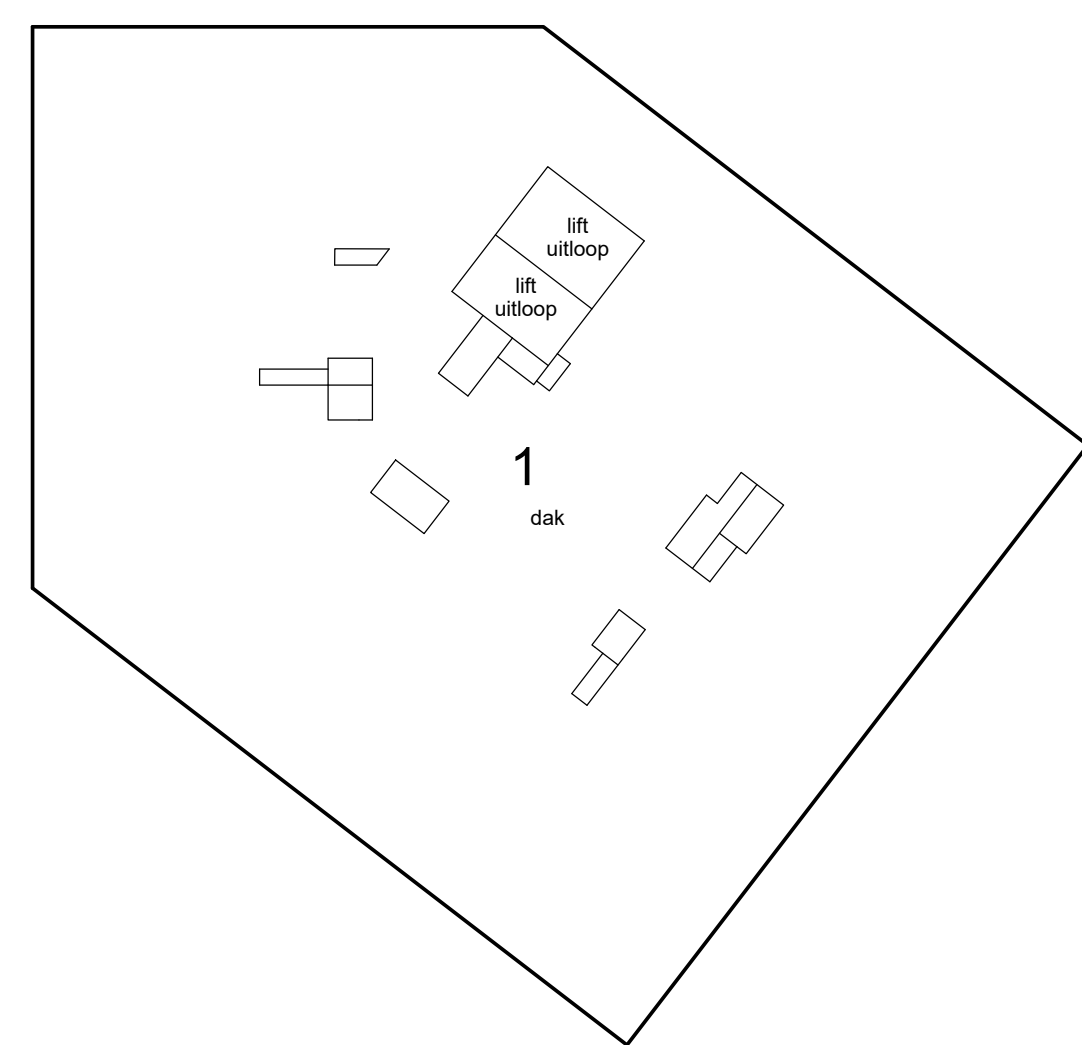
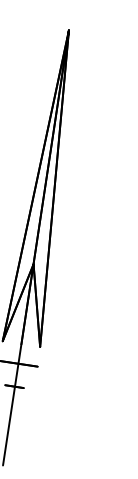
15e etage



14e etage



Schaal 1 : 200
= Gemeenschappelijk
Tekening bestaat uit 10 bladen
Blad 10



dak

